



NJACE ACCESS

New Jersey Association of Colleges and Employers

VOLUME 1, ISSUE 1

MARCH 2008

EXECUTIVE BOARD

- **President**
Debra Stark
- **President-Elect**
Cristina Damiao
- **Past President**
Sharon Goldstein
- **Treasurer**
Debra Kelly
- **Secretary**
Elisa Varon
- **Employer Relations Representative**
Brianna MacKenzie
- **College Representative**
Lizziel W. Sullivan

Newsletter Editor
Cristina Damiao

INSIDE THIS ISSUE:

- New Jersey 2
- Across the Nation 2
- Member News 2
- Employer Spotlight 3
- Did You Know 3
- Who to Ask 4
- Calendar of Events 4

President's Message...

Dear NJACE Members,

Spring semester 2008 is underway and the NJACE Executive Board is committed to growth and development and continuous sharing of ideas, experiences and change. The January roundtables kicked off the New Year and participants reported a positive experience. Insights, innovate programs and new questions arose, several of which we will highlight below.

We have a planning committee working on NJACE's next program in March and an exciting day is planned. Do you know what an avatar is? Ever wonder how a polygraph works? Do you know the keywords recruiters

are looking for? Mark your calendars for March 13th and plan to attend for the answers. Details are



available on our website at www.njace.net.

Members are invited to participate in the planning and coordinating of NJACE roundtables and programs. If you are interested in

becoming more involved, hosting a roundtable or have a topic you would like to discuss please feel free contact me at dstark@ramapo.edu.

As always, wishing you health and happiness and I look forward to seeing you in March!

Debra Stark

Debra Stark
President, 2007-08

For more information and general questions about NJACE, please visit our website at <http://www.njace.net> or e-mail us at info@njace.net

The Membership Advantage...

As a member of NJACE, you have access to contacts, resources, knowledge and support from industry specialists across the State of New Jersey. Access to all your NJACE benefits is easy and only a click away at www.njace.net Your NJACE benefits include:

- Networking opportunities with peers in NJ and across the country
- Up-to-date news and information
- Savings on car rentals
- Mentorship possibilities
- Invitations to local, regional and national events
- Special members-only services and reduced rates
- Spring and Fall e-newsletters addressing a wide-range of career-related issues and topics.

About New Jersey...



- **New Jersey ranks #1** among the states in annual net of exodus among high school graduates to attend college. (Source: New Jersey Association of State Colleges and Universities)
- **...New Jersey is caught in "the economic doldrums"** and its economy likely will perform worse than the rest of the nation's through at least 2012, according to a Rutgers University semiannual economic forecast... (Source: afxnews.com)
- On February 26, 2008, **Governor Corzine** stated that the State budget would be cut to \$32.97 billion, proposing the cut of 3,000 jobs, through early retirements and the eliminating of the departments of agriculture, commerce and personnel...and also **proposed to cut the state aid to colleges and universities by 4 percent**, or \$76 million... (Source: efluxmedia.com)

...Across the Nation

Occupational Employment Projections to 2016

By Arlene Dohm and Lynn Shniper

(Excerpted from the November 2007 Monthly Labor Review)

Changes to the U.S. population and economy through 2016 will affect both employment in general and employment by occupation. During 2006–16, the civilian noninstitutional population aged 16 years or older is projected to increase by about 22 million, from 229 million to 251 million. As the baby-boom generation ages, the segment of that population aged 55 years and older is expected to increase by 20 million—nearly as much as the increase in the total population—reaching 87 million by 2016. The swell in the 55-years-and-

older group will lead to an increase in the proportion of the population in older age groups, with the share of those 55 years and older rising from 29.3 percent in 2006 to 34.8 percent in 2016. The latter age group is anticipated to be the fastest growing segment of the population between 2006 and 2016, with an annual growth rate of 2.7 percent, compared with 0.9 percent for the population 16 years and older.

Over the 2006–16 projection period, growth in the labor force is projected to slow significantly, for two reasons: the baby-boom generation is aging and retiring, and the labor force participation rates of women have peaked. The labor force is expected to grow at an annual rate of 0.8 percent during 2006–16, com-

pared with a rate of 1.2 percent in 1996–2006. Although the labor force participation rate for those aged 55 years and older is anticipated to jump from 38.0 percent to 42.8 percent during the coming decade, a large number of persons aged 55 years and older are expected to retire and leave the labor force.

The retirements of baby boomers will have a substantial impact on job openings over the coming decade. Net replacement needs are defined as job...

A link to the complete article is: <http://www.bls.gov/opub/mlr/2007/11/art5full.pdf>

Special Thanks to the **Bureau of Labor Statistics** for this article.

Member News...



- Congratulations to **Walter L. Tarver, III**, who assumed the helm at the Richard Stockton College of NJ as Director of Career Services in August of 2007. He holds an MBA from University of Buffalo and BA in Political Science from Buffalo State College
- Under the leadership of **G. Joyce Tyler**, Rider University's Office of Career Services will be undertaking the placement component of the Cooperative Education Program for Finance and Accounting majors only.
- **Cristina Damiao**, Director, Career Services at Felician College, and **Flora M. Stowe**, Director, Career Services at College of St. Elizabeth, are co-chairs of MACCA's 2008 Fall Conference, Nov. 5-7, 2008, Lancaster, PA.

Employer Spotlight...



Chanan Coyle

Do you have an intern working in your office? Were you an intern at one time? People usually know of an intern working in the office or know of someone's son or daughter who is filling in for the summer. Now a local service is helping employers to formalize these programs, understand how they work and connect them to local students and

colleges in their area.

South Jersey based USAINTERN,LLC operates an online service called www.jerseyintern.com. As the largest provider of New Jersey internships, Jerseyintern.com promotes thousands of local internships to students throughout the tri-state area. Today, Jerseyintern.com is the largest New Jersey internship resource.

Jerseyintern.com works with employers and students in New Jersey, New York, Pennsylvania and Delaware. One of our goal is to "... help employers to find people that are close to their office." Our aim is to make the process as easy as possible for the employers.

USAINTERN,LLC was the brainchild of Ms. Coyle based primarily on her experience as a Senior Media Coordinator at the media buying company, Compas, Inc. Ms. Coyle presented her

idea as a new business venture to the President of Compas Inc. "The proposal was accepted and immediately development was initiated. jerseyintern.com was launched in April 2005 and experienced a 400% increase in hits in its first year.

Ultimately, the goal is to provide a cost effective and time efficient service for both students and employers. "We want to connect enthusiastic students, who recognize the importance of internships, to companies that offer valuable opportunities," remarked Ms. Coyle. Recently jerseyintern.com polled over 1,700 students from site and the survey showed that 100% felt that internships were important to their career. For further information about jerseyintern.com, please call (856)675-1288, email ccoyle@jerseyintern.com or visit our site jerseyintern.com.

Did You Know...

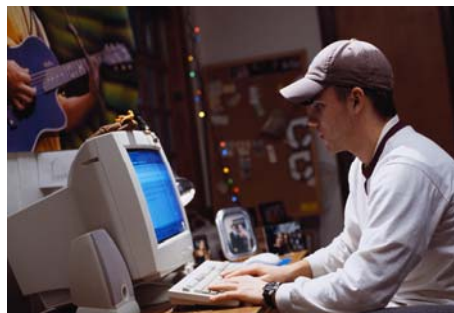
ROUNDTABLE UPDATES

January 17, 2008

The College of New Jersey

- **The Career Resource Managers Association (CRMA)**, is a professional organization for career resource librarians and other career professionals who manage information resources. Learn more about CRMA by visiting their website at <http://www.crmaonline.org/resources.html>
- **MonsterTrak** is getting out of the college recruiting business and Stockton College is launching CSO to manage recruitment and job opportunities for students and alumni. Other options being looked at by campuses are NACElink and **E-recruiting**. We looked forward to hearing and sharing information about these options in the near future.

- **Raritan Community College** is sponsoring its first **virtual internship fair** and is looking for tips and advice. Contact Linda Levitt at llevitt@raritanval.edu if you can share ideas or thoughts.
- some great **podcasts** discussing job searches, informational interviewing and networking available at <http://www.suemorem.com/podcasts/index.php>
- Career Offices are grappling with the **writing skills of students** applying to graduate school.



EMPLOYER NEWS

- **Enterprise Rent-a-Car**, in conjunction with the **New York Urban League** and the **New Jersey State-wide Hispanic Chamber of Commerce** is sponsoring a **\$2,000 scholarship**. Deadline is March 30 so contact your Enterprise Rent-a-Car representative to learn more about this opportunity.
- F.B.I. deadline for summer **2009 Honors Internship** is October 8, 2008.
- The **federal GPA** requirement is **3.0** **New Jersey applicants** should have a **3.5** for consideration. **Tough competition!**
- FAREWELL! **IRS recruiter Kurt Gruninger** will be leaving his recruiter role soon. **We will miss you Kurt!** But we look forward to meeting the person who will be replacing you.



NEW JERSEY ASSOCIATION OF COLLEGES AND EMPLOYERS

“...building relationships between colleges and employers...”

WHO DO I CONTACT WITH QUESTIONS ABOUT...

Questions or comments?
Interested in sponsoring
or advertising in an issue
of the NJACE
E-Newsletter? Please
contact **Cristina
Damiao**, Newsletter
Editor, at
damiaoc@felician.edu.

- 1. I am interested in becoming a member of NJACE, who do I contact?**
Any of the officers would be happy to assist you with this information, however, depending on which type of membership you are seeking, you will either reach out to either our College Representative or Employer Representative.
- 2. I want more information about NJACE events, who do I contact?**
You can visit our website at www.njace.net for updates, send us an e-mail at info@njace.net, or contact the President.
- 3. I want information about future roundtables and conferences, who do I contact?**
You may contact the President, President-Elect, and or the Past President, in addition to visiting our website for up-to-date information.
- 4. I want to advertise my event/program on the NJACE website, who do I contact?**
You should send an e-mail to the President at dstark@ramapo.edu or the Secretary at varoneli@shu.edu.



...Calendar of Events (all events are subject to change)

2008

JANUARY

- 11— Directors' Roundtable
Felician College
- 17— NJACE Roundtable
Trenton College of NJ

MARCH

- 13—NJACE Spring Conference
**“High Tech - High Touch:
Technology in Higher Education
and Recruiting”**
Liberty Science Center
Jersey City, NJ

2008 (continued)

JUNE

- 5—Directors' Roundtable
Location –TBA
- 12—NJACE Roundtable
**“Working with people with
disabilities”**
Drew University
- End of the Year Event—Date-TBA
Location—TBA



Thank you for your continued support.

See you in September!



FYI

OCTOBER

- NJACE in association with NJCEIA will host **“Diversity in the Workplace”**
Date—TBA
Location –TBA